

A woman with brown hair is wearing a black VR headset and smiling. She is wearing a blue and white striped long-sleeved shirt. The background is a blurred indoor setting with warm lighting. At the bottom of the image, there is a glowing, stylized city skyline with various skyscrapers. The text 'SKYWORKS' is overlaid on the woman's forehead area, and 'University Relations Program' is overlaid on the city skyline at the bottom.

SKYWORKS®

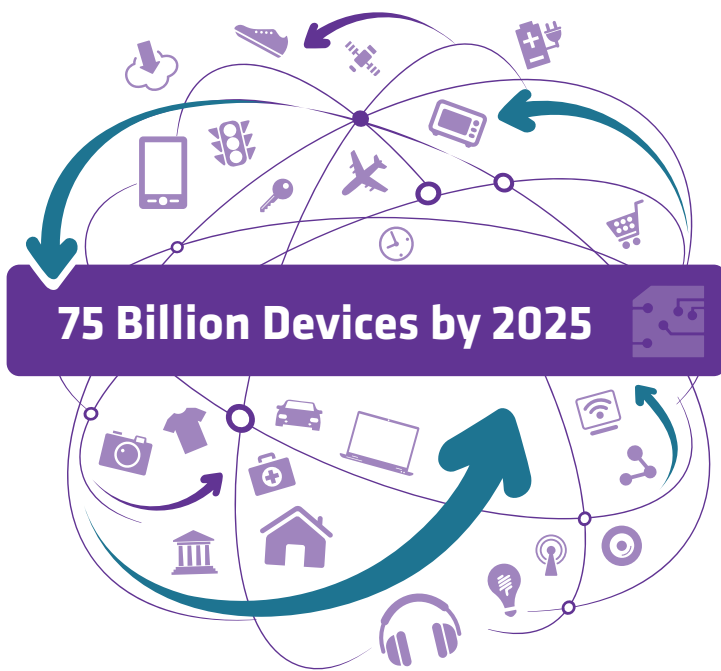
University Relations Program

Begin Your Career at Skyworks!

Who We Are

Skyworks is empowering the wireless networking revolution, connecting people, places and things around the world. As the demand for ubiquitous, "always-on" connectivity increasingly expands, our innovative, high performance analog semiconductors are enabling breakthrough communication platforms from global industry leaders – changing the way we live, work, play and learn.

Through our broad technology expertise and one of the most extensive product portfolios in the industry, we are **Connecting Everyone and Everything, All the Time.**



Why Skyworks?

Skyworks is uniquely positioned to capitalize on the powerful underlying demand to connect nearly everything around us. In every way the world is connected, Skyworks is there. Whether reaching for a smartphone or tablet, setting a smart thermostat, or communicating wirelessly with your medical provider, Skyworks is connecting people to vital information. The possibilities are virtually endless.

Come be a part of a company that is changing the way the world communicates!



The environment is very conducive to learning, growing and developing in the RF industry. Moreover, the knowledge that people are going to use mobile devices incorporating the circuits I help design, is exhilarating and highly motivating.

- Nidhi
Engineering Intern



It has been exciting for me to work as a co-op student at Skyworks. My primary focus has been LNA switch controller simulation and MIPI® testing. I have gained a lot of experience with simulation setups and usage methods of testing tools. I was able to apply my education to current industry design techniques, helping me gain valuable insight into my career. With the support of Skyworks' senior engineers, I was given a unique and wonderful first-hand experience as an analog design engineer.

- Xinyu
Engineering Co-op Student

Our University Relations Program

We want you to join us and help shape the future of wireless as you turn-on and power-up your career! We routinely participate in numerous on-campus recruitment activities at top universities and technical colleges around the globe in order to attract and hire the very best interns, co-op students and graduates. We have exciting opportunities for undergraduate, master's and Ph.D. students across the organization.

What We Look For

Our program seeks students who are currently enrolled in (or have recently graduated from) an associate's, bachelor's, master's or Ph.D. program. We hire interns, co-op students and recent graduates globally.

Internship and Co-Op Programs

Skyworks' internship and co-op programs focus on attracting and retaining the best new talent. We provide students the opportunity to combine their academic knowledge with hands-on experience in an applied setting.

Our **interns** typically work part-time, around their course schedule, during the Winter/Spring or Fall terms. Our interns may also be students who work full-time during the Summer term.

Our **co-op** students typically work at Skyworks during a semester off from school, in lieu of taking courses that semester, full-time for 6-12 months.

Students who work for Skyworks through our intern and co-op programs are also being evaluated for long-term success and future positions within the company. We provide valuable feedback, and encourage the development of both technical and workplace skills.

Graduating Students and Recent Graduates

Skyworks invites students who have recently completed (or are near the completion of) their bachelor's, master's or Ph.D. degree within the past 12 months to apply for available **full-time, entry level** positions.

Our full-time, entry level positions enable recent graduates to use their knowledge and skills for real world applications. Our culture nurtures existing talents, while developing new ones. We want our employees to grow in a way that contributes to personal success, and the success of Skyworks. Our fast-paced environment provides recent graduates the ability to get their career up and running!

About our Interns and Co-Ops



Skyworks hires nearly 100 interns and co-op students from our UR program



Interns and co-ops represent almost 50 different colleges/universities in U.S. and Canada



Skyworks interns and co-ops are in the process of earning BS, MS, and PhD degrees



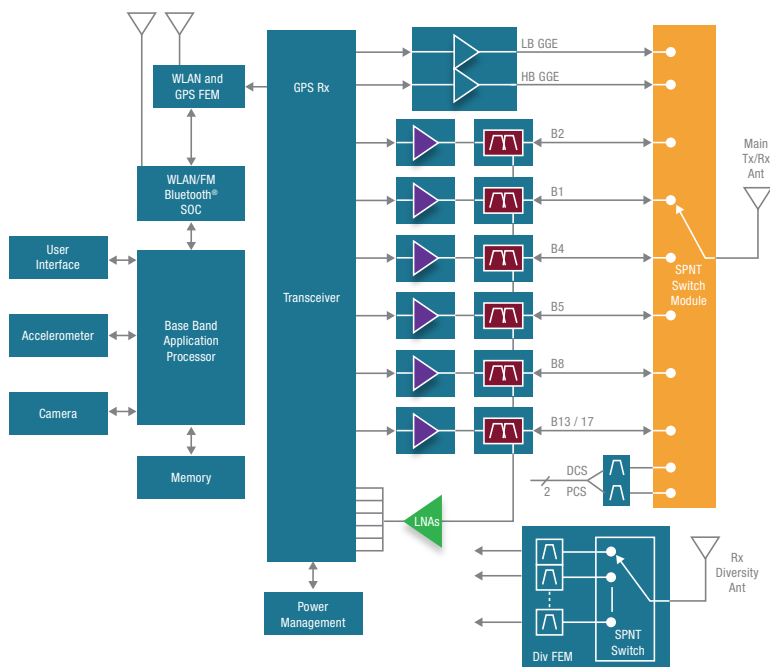
Our students are partnering with teams and mentors in twelve of our facilities around the globe



Skyworks holds events celebrating our interns and co-ops during National Intern Day



Empowering the 5G Revolution

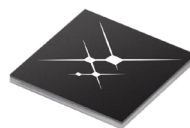


Mobile Phone Block Diagram

Be a Part of The Wireless Solution!

You can be a part of a team that is transforming our world with technologies that make 5G a reality. Being at the forefront of this sea change, our interns and co-ops can impact the wireless revolution with designs and solutions for new and unimagined applications.

Together, you will help create solutions to enable pragmatic, yet groundbreaking devices. With decades of experience and billions of field proven solutions spanning multiple generations of wireless standards, we are leveraging our extensive expertise in connectivity to meet the stringent design criteria for our customers.



Benefits

Skyworks offers a comprehensive benefits package to all full-time employees. Hourly employees, such as interns and co-op students, who are regularly scheduled to work at least 30 hours per week are eligible for medical benefits, wellness days and paid federal holidays. Coverage is effective upon first day of employment.

Our Opportunities

What We Look For

We seek students who are currently enrolled in (or have recently graduated from) an associate's, bachelor's, master's or Ph.D. program. We hire interns, co-op students and recent graduates globally for all of our business units.

Some relevant degrees:

- **Chemical Engineering**
- **Computer Science and Engineering**
- **Electrical Engineering**
- **Materials Science and Engineering**
- **Physics**
- **Operations and Supply Chain Management**
- **Mechanical Engineering**
- **Industrial Engineering**
- **And more!**

Because our success is based on the ability to innovate, we hire only the best talent available including:

- RF and Microwave Engineers
- PA Design Engineers
- Analog Design Engineers
- Mixed Signal Design Engineers
- RF Systems Engineers
- RF Technicians
- Sales and Sales Support
- Administration: Finance, HR, IT and Supply Chain
- Packaging Engineers
- Product Engineers
- Quality Engineers
- RFIC Design Engineers
- Test Engineers
- Process Engineers
- Equipment Engineers
- Product Application Engineers
- Industrial Engineers
- IC Layout Designers
- Filter Design Engineers
- Verification Engineers



The training and education I have received from Skyworks has been absolutely invaluable. There are very few experiences that can compare to the personal and professional growth I have experienced from working with the best and the brightest in the RF world. Through my experiences I have made the correlation between the classroom and the engineering world.

- David
Engineering Co-op Student



It has been a rewarding and invaluable experience to work as an intern at Skyworks. I worked closely with my mentor and senior design engineers, educating myself on advanced RF/EM design and simulation tools, which will propel my career forward. Skyworks has a very positive environment that promotes innovation and fosters a harmonious working relationship with interns.

- Sheikh
RFIC Design Intern

A Culture That Breeds Success

Work Culture

Our culture promotes fast decision-making, openly sharing of best practices and a sense of individual ownership, so we can create unparalleled products and respond quickly to customer needs. These values lead to business agility and customer centricity – essential ingredients for success.

At Skyworks we realize that in order to exceed our customers' expectations, we must maintain and foster a work environment where our employees feel empowered and motivated. Our culture is based on minimal layers of management, ease of collaboration, open communication and an entrepreneurial attitude of taking well-calculated risks. Teamwork is at the center of everything that we do at Skyworks. Our global team collaborates daily to create the solutions the world relies on. This collective effort produces innovative products and solutions for a variety of end markets and applications.

Diversity / Inclusion

Skyworks supports diversity in the workplace and is proud that our employee culture represents more than 60 nationalities worldwide. We value the opinions, ideas, backgrounds and experiences of our talented global workforce which are exemplified in all company programs, activities and guidelines, including hiring practices, transfers, promotions, training, education, compensation, benefits and recognition programs.



Sustainability

Sustainability matters. The actions we take and choices we make today affect our future. For this very reason, Skyworks is committed to operating under sustainable business practices. We continuously strive to make our products better – from design and development, to manufacturing, performance, and end of life. For example, efficiency in design ensures our solutions are developed to minimize power consumption and increase battery life. Efficiency in manufacturing ensures we employ minimal materials and natural resources.

Commitment to Success

Need more proof that Skyworks is an ideal place to build a career? Below are just a few of our awards.



Management Top 250



Skyworks is an Equal Opportunity Employer. Employment decisions are made without regard to race, color, religion, national origin, gender, sexual orientation, gender identity, age, physical or mental disability, genetic factors, military/veteran status or other characteristics protected by law.

Global Scale

Skyworks has engineering, manufacturing, sales and service facilities throughout Asia, Europe and North America. We employ a global workforce of application and systems engineers who leverage our deep understanding of platform-level requirements to deliver best-in-class solutions, thereby enabling customers to focus on market demands and industrial design while we provide the complete analog system.



Apply Today!

You Can Help Shape the Future of Wireless

Skyworks hires year round and we do not have application deadlines. To apply online, please visit our website at www.skyworksinc.com/careers. You can also email your resume directly to our Campus Recruiting Team at campusrecruiting@skyworksinc.com.

Stay Connected

We develop and maintain relationships with colleges and universities across the U.S. and around the world. Skyworks participates in on-campus recruitment events such as career fairs, information sessions and technical seminars, and partners with a variety of student organizations. Please visit our website to learn if we will be visiting your campus soon! You can also follow Skyworks on:



