

EXTERNAL 32.768 KHZ CRYSTAL OSCILLATOR

1. Introduction

This document describes an external 32.768 kHz oscillator circuit for use with the Si4700/01/02/03. It provides the required components, the schematic, and recommended layout guidelines.

2. Oscillator Circuit Description

The circuit makes use of an unbuffered inverter, four external resistors, two capacitors, and a 32.768 kHz crystal.

3. Schematic and Bill of Materials

Figure 1 shows the external oscillator circuit schematic. Table 1 shows the bill of materials with component values, vendors, and descriptions.

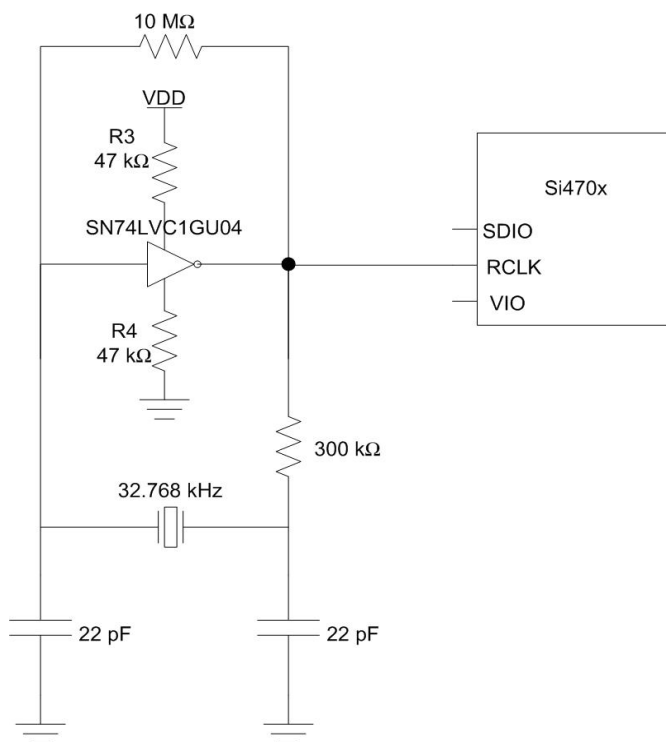


Figure 1. 32.768 kHz Crystal Oscillator Circuit Schematic

3.1. Schematic Description

Resistors R3 and R4 limit the current driving capability of the unbuffered inverter. This maintains current consumption of the circuit at approximately 8 μ A when VIO = 3.3 V. Resistor R2 biases the inverter to its linear operating region to start and maintain oscillation. In order to not exceed the maximum crystal power dissipation, the total power delivered to the crystal must be controlled. The resistor R1 provides this current limiting in the example circuit shown in Figure 1 and has been tuned to ensure that the 1 μ W power limit for the ECS-.327-12.5-13 is not exceeded. For a different crystal check the data sheet to ensure that the maximum power dissipation is not exceeded. Capacitors C1 and C2 provide the required load capacitance for crystal oscillation at the desired 32.768 kHz frequency.

AN299

3.2. Bill of Materials

Table 1. Bill of Materials

Item	Qty	Refdes	Description	Value	Footprint	MFG/Vendor	MFG/Vendor_PN
1	2	C1,C2	CAP,SM,0402	22 pf	CC0402	Kemet	C0402C220J5GAC-TU
2	1	R1	RES,SM,0402	300 k	RC0402	Vishay	CRCW0402304JRT7
3	1	R2	RES,SM,0402	10 M	RC0402	Vishay	CRCW0402106JRT7
4	2	R3,R4	RES,SM,0402	47 k	RC0402	Vishay	CRCW0402473JRT7
5	1	X1	32.768 kHz Quartz Crystal, 12.5 pF, ± 20 ppm, ECS-.327-12.5-13		2X6	ECS	ECS-.327-12.5-13
6	1	U1	SN74LVC1GU04, unbuffered single inverter, 1.65 to 5.5 V, SC70-5		SC70-5	Texas Instruments	SN74LVC1GU04

4. Layout Recommendations

The input of the inverter is a high impedance node and is sensitive to noise. For this reason, special care should be taken to isolate this portion of the circuit from digital signals or other noise sources. Surrounding this node by a ground trace or plane is recommended.

Figure 2 shows the sensitive portions of the circuit, and Figure 3 shows an example of using ground fill to isolate the input of the inverter from digital signals.

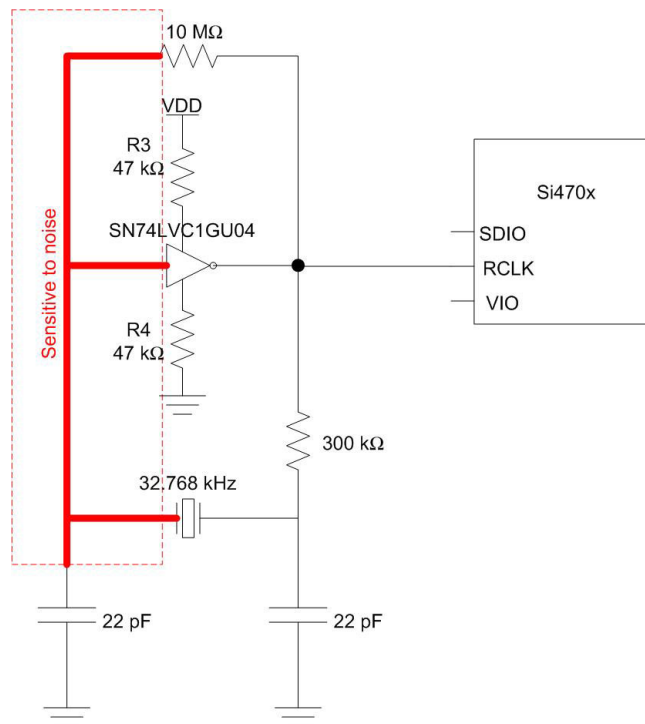


Figure 2. 32.768 kHz Crystal Oscillator Circuit with Noise Sensitive Areas Highlighted

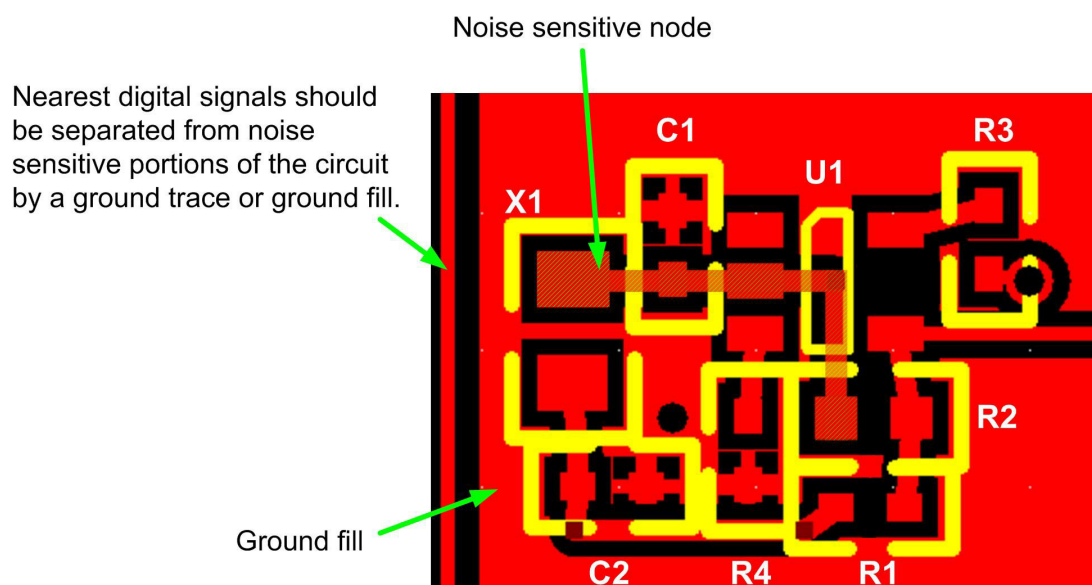


Figure 3. Example Layout Showing the Use of Ground Fill to Minimize Noise



SKYWORKS®

ClockBuilder Pro

Customize Skyworks clock generators, jitter attenuators and network synchronizers with a single tool. With CBPro you can control evaluation boards, access documentation, request a custom part number, export for in-system programming and more!

www.skyworksinc.com/CBPro



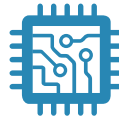
Portfolio

www.skyworksinc.com/ia/timing



SW/HW

www.skyworksinc.com/CBPro



Quality

www.skyworksinc.com/quality



Support & Resources

www.skyworksinc.com/support

Copyright © 2021 Skyworks Solutions, Inc. All Rights Reserved.

Information in this document is provided in connection with Skyworks Solutions, Inc. ("Skyworks") products or services. These materials, including the information contained herein, are provided by Skyworks as a service to its customers and may be used for informational purposes only by the customer. Skyworks assumes no responsibility for errors or omissions in these materials or the information contained herein. Skyworks may change its documentation, products, services, specifications or product descriptions at any time, without notice. Skyworks makes no commitment to update the materials or information and shall have no responsibility whatsoever for conflicts, incompatibilities, or other difficulties arising from any future changes.

No license, whether express, implied, by estoppel or otherwise, is granted to any intellectual property rights by this document. Skyworks assumes no liability for any materials, products or information provided hereunder, including the sale, distribution, reproduction or use of Skyworks products, information or materials, except as may be provided in Skyworks' Terms and Conditions of Sale.

THE MATERIALS, PRODUCTS AND INFORMATION ARE PROVIDED "AS IS" WITHOUT WARRANTY OF ANY KIND, WHETHER EXPRESS, IMPLIED, STATUTORY, OR OTHERWISE, INCLUDING FITNESS FOR A PARTICULAR PURPOSE OR USE, MERCHANTABILITY, PERFORMANCE, QUALITY OR NON-INFRINGEMENT OF ANY INTELLECTUAL PROPERTY RIGHT; ALL SUCH WARRANTIES ARE HEREBY EXPRESSLY DISCLAIMED. SKYWORKS DOES NOT WARRANT THE ACCURACY OR COMPLETENESS OF THE INFORMATION, TEXT, GRAPHICS OR OTHER ITEMS CONTAINED WITHIN THESE MATERIALS. SKYWORKS SHALL NOT BE LIABLE FOR ANY DAMAGES, INCLUDING BUT NOT LIMITED TO ANY SPECIAL, INDIRECT, INCIDENTAL, STATUTORY, OR CONSEQUENTIAL DAMAGES, INCLUDING WITHOUT LIMITATION, LOST REVENUES OR LOST PROFITS THAT MAY RESULT FROM THE USE OF THE MATERIALS OR INFORMATION, WHETHER OR NOT THE RECIPIENT OF MATERIALS HAS BEEN ADVISED OF THE POSSIBILITY OF SUCH DAMAGE.

Skyworks products are not intended for use in medical, lifesaving or life-sustaining applications, or other equipment in which the failure of the Skyworks products could lead to personal injury, death, physical or environmental damage. Skyworks customers using or selling Skyworks products for use in such applications do so at their own risk and agree to fully indemnify Skyworks for any damages resulting from such improper use or sale.

Customers are responsible for their products and applications using Skyworks products, which may deviate from published specifications as a result of design defects, errors, or operation of products outside of published parameters or design specifications. Customers should include design and operating safeguards to minimize these and other risks. Skyworks assumes no liability for applications assistance, customer product design, or damage to any equipment resulting from the use of Skyworks products outside of Skyworks' published specifications or parameters.

Skyworks, the Skyworks symbol, Sky5®, SkyOne®, SkyBlue™, Skyworks Green™, Clockbuilder®, DSPLL®, ISOModem®, ProSLIC®, and SiPHY® are trademarks or registered trademarks of Skyworks Solutions, Inc. or its subsidiaries in the United States and other countries. Third-party brands and names are for identification purposes only and are the property of their respective owners. Additional information, including relevant terms and conditions, posted at www.skyworksinc.com, are incorporated by reference.

Skyworks Solutions, Inc. | Nasdaq: SWKS | sales@skyworksinc.com | www.skyworksinc.com

USA: 781-376-3000 | Asia: 886-2-2735 0399 | Europe: 33 (0)1 43548540 | [in](#) [f](#) [t](#) [v](#)